

InCommand® Version 8.5 Firmware Release

Ag Leader Technology® is pleased to announce the release of new firmware. Features and improvements in this version are listed below. Download this free update directly to your display with AgFiniti® automatic updates; it is also available from <http://www.agleader.com>.

IMPORTANT!

- A. It is recommended that a backup be created prior to upgrading display firmware
- B. SMS™ Version 23.5 required to read in map data from version 8.5

New in 8.5

General

- **ENHANCED:** DisplayCast® sync improvements
- **FIXED:** Automatic legends for application defaulted off
- **FIXED:** Inadvertent SmartPath® initialization messages

Crop Care

- **FIXED:** RightSpot™ pressure settings not saved through region changes
- **FIXED:** Flow meter calibration turning off the product pump.
- **FIXED:** Pump Switch detection for fill station equipped Apache & Miller machines (TIA-181)

Water Management

- **FIXED:** Reloading survey guidance line using implement width
- **FIXED:** High DOP values causing displays to go into service mode while mapping topography

Harvest

- **NEW:** Ag Leader® harvest support for Case IH® 7250/8250/9250 model combines with AFS Harvest Command™
- **NEW:** Ag Leader® harvest support for John Deere® S7X0 2019+ & S7X0 model combines with ActiveYield™

New in 8.1

General

- **NEW:** Upon clock reset automatically set date & time when ZDA is present (Figure 1)
- **FIXED:** AutoSwath on small boundaries

GPS & Guidance

- **NEW:** GPS ZDA message defaulted on for GPS 6xxx/7xxx/1500/1600/2500

Planting

- **FIXED:** Seed monitoring & ISOBUS rate control configs requiring a Multi-Product unlock
- **FIXED:** Seed Tube Monitor Module unable to assign seed sensors

Harvest

- **FIXED:** Unintended module firmware update prompts (TIA-179)

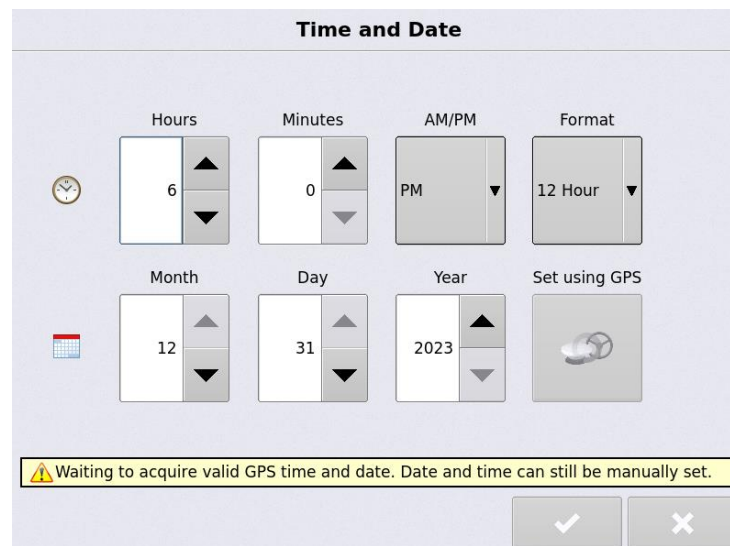


Figure 1 – Upon clock reset on startup automatically set date and time from ZDA

New in 8.0

General

- **NEW:** Speed input settings available from the map screen (Figure 1)
- **NEW:** Support for Ukrainian language translation
- **NEW:** End User License Agreement that applies to all hardware products and their interactions with AgFiniti and SMS software.
- **ENHANCED:** DisplayCast® performance to speed up syncing and reduce data usage
- **FIXED:** AutoSwath™ control on fields with multiple boundaries

GPS & Guidance

- **NEW:** Support for Terrastar C-Pro faster convergence with GPS 7500

Planting

- **ENHANCED:** Support for using seed monitoring with ISOBUS rate control planting (STMM, RCM)
- **ENHANCED:** Seed sensor performance in corn, soybeans, sunflowers, & sugar beets (SureSpeed)

Water Management

- **NEW:** Automatically reload Survey Mode guidance patterns when switching back from Install Mode
- **ENHANCED:** Always allow plow control while in Survey Mode
- **ENHANCED:** Clarify 'Too Far From Survey' message

Crop Care

- **NEW:** Product Mix by Rates calculator available on the container page (Figure 2)
- **NEW:** Active Boom Recirculation (RightSpot™) (Figure 3)
- **NEW:** Boom Pressure Relief (RightSpot™) (Figure 3)
- **NEW:** Support for enabling and disables nozzles (i.e. - switching to 15in or 30in spacing)
- **NEW:** Sprayer fill station support for remote pump enable & utilizing the fill flow meter to automatically update the display container level (RightSpot™, L2)
- **NEW:** Custom kit models (RightSpot™, L2) (See system reference or configurator for full list)

Harvest

- **FIXED:** CLAAS Bridge Module intermittent communication

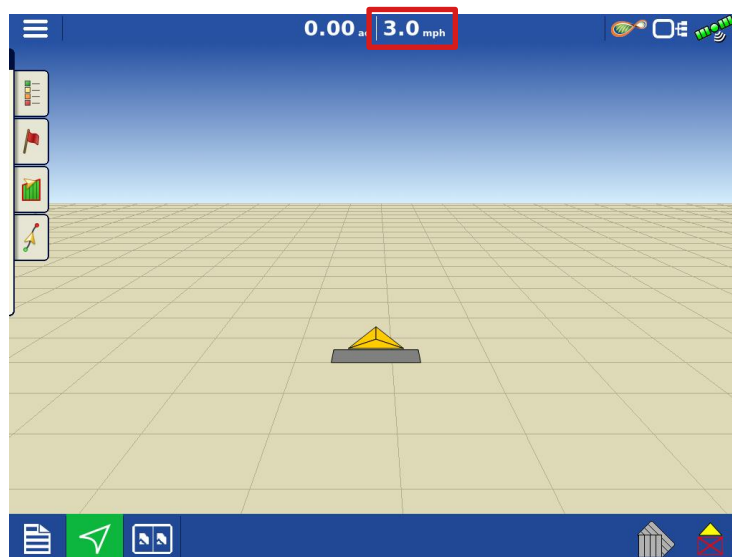


Figure 1 – Access speed input settings from the map screen by pressing on your speed readout

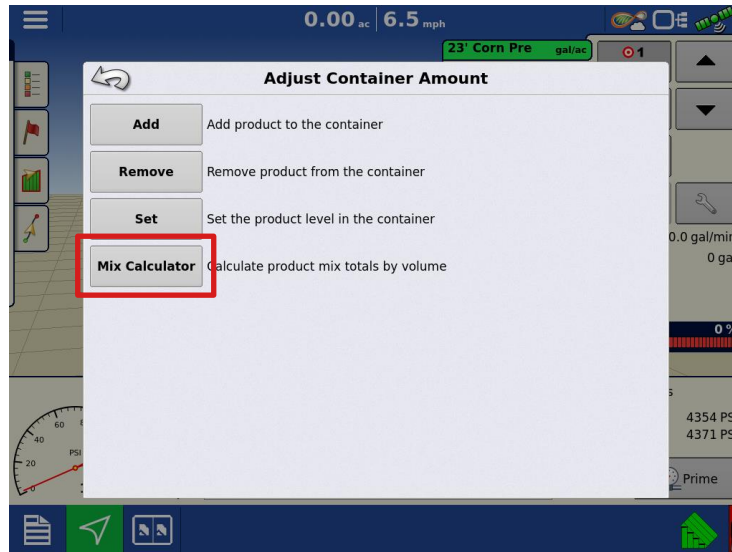


Figure 2 – Access the product mix calculator while in an operation via the container adjustment page

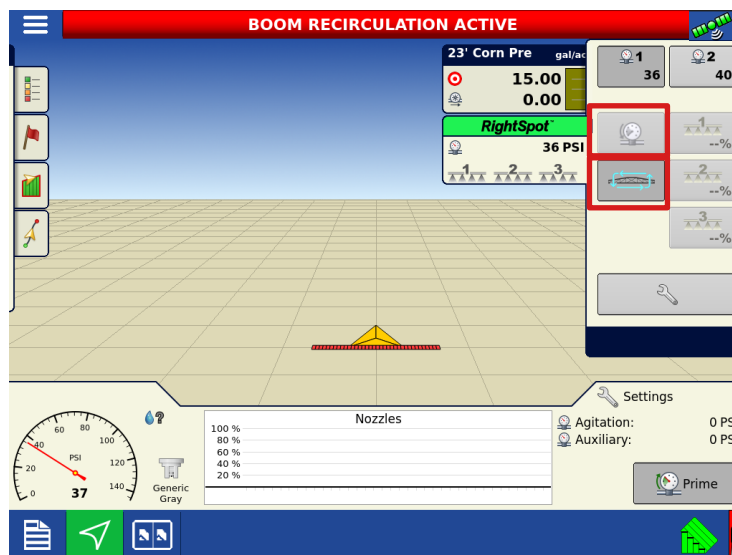


Figure 3 – Active Boom Recirculation & Boom Pressure Relief from the RightSpot® control tab

New in 7.5

General

- **NEW:** Simplified season deletion across displays using DisplayCast®
- **ENHANCED:** AutoSwath™ performance to improve handling of smaller sections
- **ENHANCED:** Login robustness with AgFiniti®
- **FIXED:** Reference maps not being displayed on the map (TIA-175)

GPS & Guidance

- **NEW:** Boundary guidance line creation with SmartPath® (Figure 1)
- **ENHANCED:** WAAS/EGNOS PRN list updated

Planting

- **NEW:** Support for sunflower crop types (SureSpeed®)
- **FIXED:** Planter Test Stand Report discrepancy (SureSpeed®)
- **FIXED:** Seed Monitoring alarms not displaying on non-rate control configurations (SureForce®)
- **FIXED:** Demo Mode launching without downforce control

Crop Care

- **NEW:** RightSpot™ nozzle by nozzle spraying system (Figure 2)
- **NEW:** DirectCommand® L2 liquid rate control system

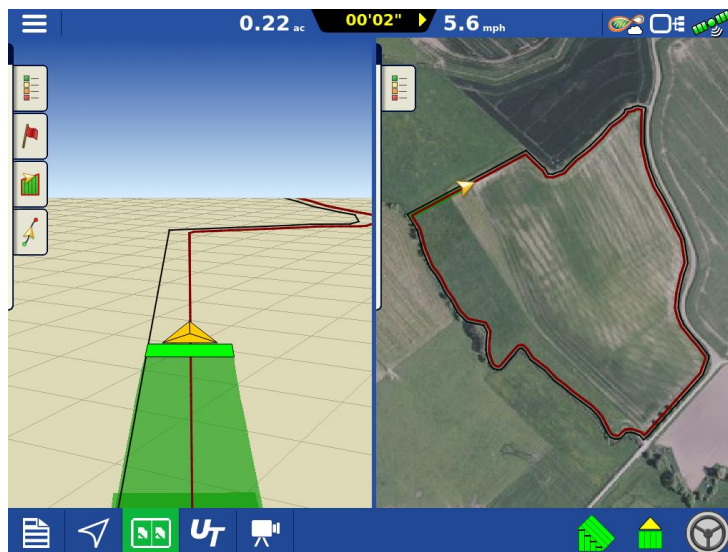


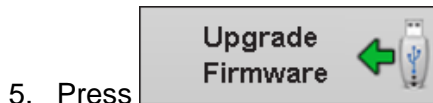
Figure 1 – Use boundary guidance to generate the first SmartPath® around inner & outer boundaries




Figure 2 – Maintain consistent droplet size and boom pressure across speed ranges with RightSpot™, in addition to nozzle-by-nozzle AutoSwath control and turn compensation to apply accurate rates around curves

Instructions for updating:

1. Copy the latest upgrade file to your external USB drive. It will have a .fw3 file extension.
2. Insert the external USB drive in the display



8. Display will process the file and ask “The upgrade is ready to install. Would you like to continue?” Press 

9. Display will cycle power automatically

10. The display upgrade will progress through 100% and then automatically power cycle.

The upgrade is now complete