

InCommand® Version 7.5 Firmware Release

Ag Leader Technology® is pleased to announce the release of new firmware. Features and improvements in this version are listed below. Download this free update directly to your display with AgFiniti® automatic updates; it is also available from <http://www.agleader.com>.

IMPORTANT!

- A. It is recommended that a backup be created prior to upgrading display firmware
- B. SMS™ Version 22.5 required to read in map data from version 7.5

New in 7.5

General

- **NEW:** Simplified season deletion across displays using DisplayCast®
- **ENHANCED:** AutoSwath™ performance to improve handling of smaller sections
- **ENHANCED:** Login robustness with AgFiniti®
- **FIXED:** Reference maps not being displayed on the map (TIA-175)

GPS & Guidance

- **NEW:** Boundary guidance line creation with SmartPath® (Figure 1)
- **ENHANCED:** WAAS/EGNOS PRN list updated

Planting

- **NEW:** Support for sunflower crop types (SureSpeed®)
- **FIXED:** Planter Test Stand Report discrepancy (SureSpeed®)
- **FIXED:** Seed Monitoring alarms not displaying on non-rate control configurations (SureForce®)
- **FIXED:** Demo Mode launching without downforce control

Crop Care

- **NEW:** RightSpot™ nozzle by nozzle spraying system (Figure 2)
- **NEW:** DirectCommand® L2 liquid rate control system

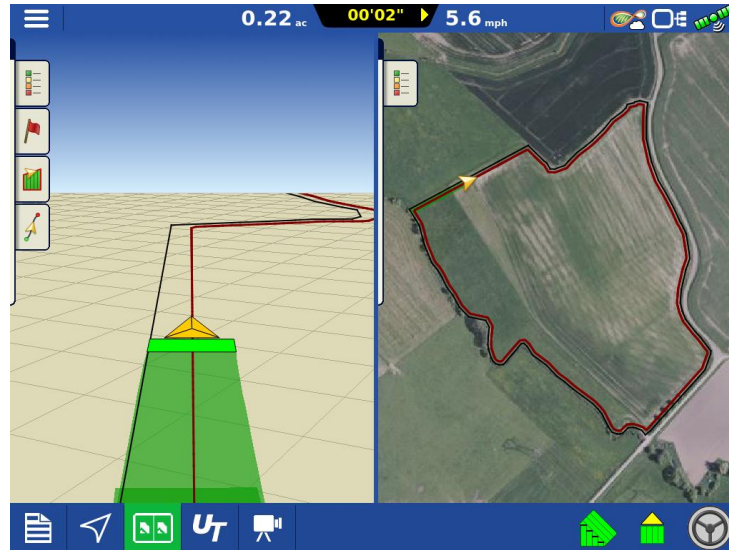


Figure 1 – Use boundary guidance to generate the first SmartPath® around inner & outer boundaries



Figure 2 – Maintain consistent droplet size and boom pressure across speed ranges with RightSpot™, in addition to nozzle-by-nozzle AutoSwath control and turn compensation to apply accurate rates around curves

New in 7.0

General

- **NEW:** Upload & Share Display, SCM, & GPS diagnostic log files via AgFiniti
- **NEW:** Free AgFiniti® license accounts can transfer files with InCommand®
- **ENHANCED:** Login robustness with AgFiniti®
- **ENHANCED:** DisplayCast® performance to speed up syncing and reduce data usage

- **ENHANCED:** DisplayCast® alarm reporting & logging
- **FIXED:** DisplayCast® not syncing when importing additional variety tracking maps
- **FIXED:** Displays not fully booting up
- **FIXED:** Unsuccessful display upgrades from AgFiniti® (Updating via USB required for v7.0, future versions will successfully upgrade from AgFiniti) (TIA-169)

GPS & Guidance

- **NEW:** Port C support with GPS 6000/6500/7000/7500 (Figure 1)
- **NEW:** SmartPath® Guidance always enabled
- **ENHANCED:** SmartPath® pattern grouping options (Figure 2)
- **ENHANCED:** Set B point after 33ft (10m) on straight and identical curve guidance lines
- **ENHANCED:** Show guidance line heading in the load pattern dialog
- **FIXED:** Guidance width not always defaulting to Implement width

Planting

- **NEW:** Alert when the delivery tube seed sensor is obstructed (SureSpeed®)
- **NEW:** Support for cotton, milo, & sugar beet crop types (SureSpeed®)
- **ENHANCED:** Notifying when downforce is in a hold state (Figure 3) (SureForce®)
- **ENHANCED:** Inadvertent delivery tube alarms when turning on headlands (SureSpeed®)
- **ENHANCED:** Seed sensor performance in corn and soybeans (SureSpeed®)
- **FIXED:** Planter test stand reporting for planter average and row summary (SureSpeed®)

Harvest

- **FIXED:** Communication drops with CLAAS Quantimeter harvest & steering system

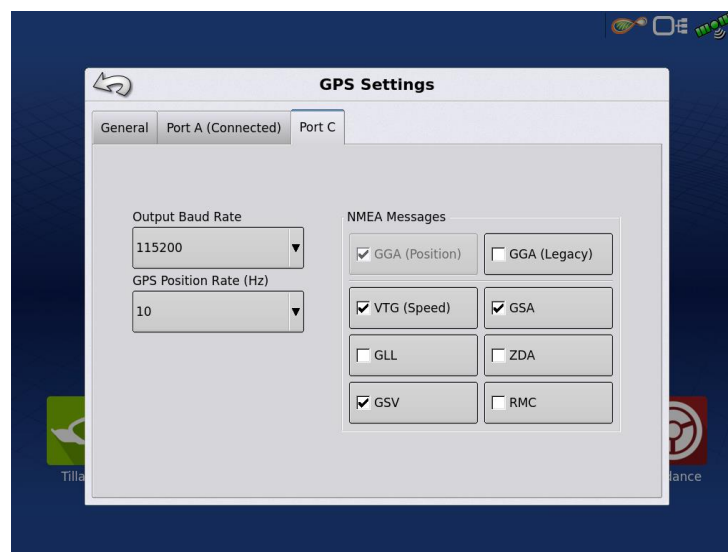


Figure 1 – Configure Port C settings with GPS 6000/6500/7000/7500 **Require additional cable PN: 4006779-18**

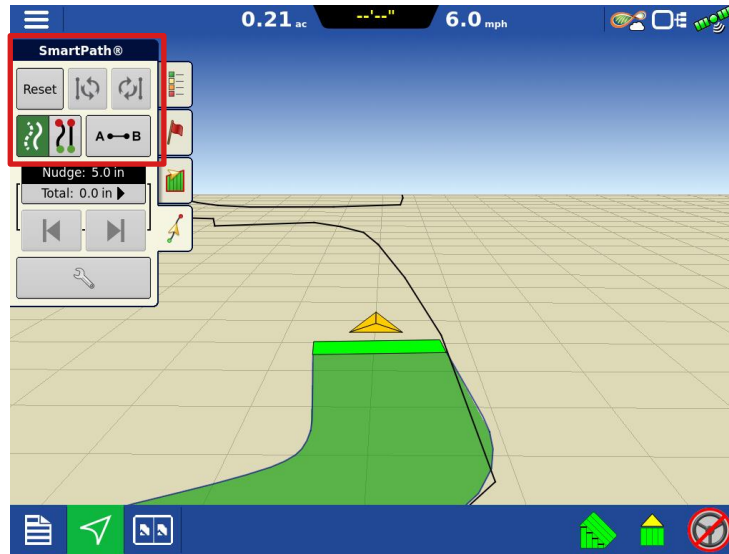


Figure 2 – Able to group identical curve guidance patterns with SmartPath®

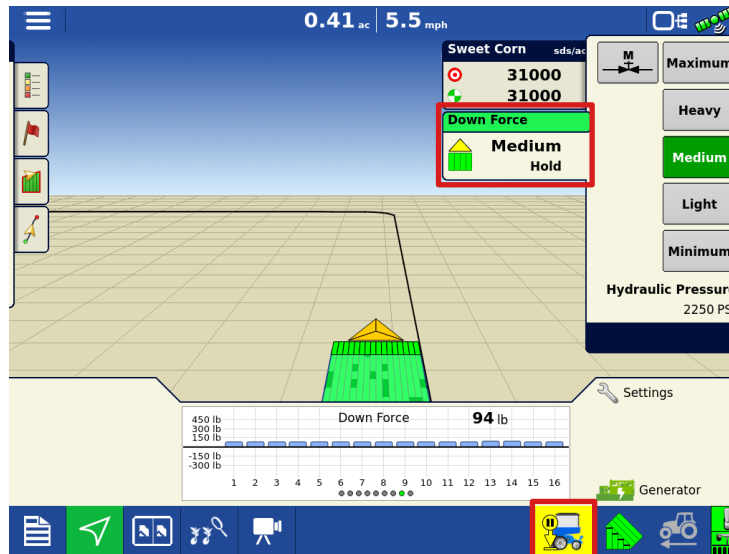


Figure 3 – Show current downforce mode & signal users when the system is in a hold state

New in 6.6

GPS & Guidance

- **FIXED:** Unable to communicate with GPS 7500 RTK Relays (TIA-165)

New in 6.5

General

- **NEW:** Automatically update firmware using AgFiniti® for InCommand®, GPS 7500, SteerCommand® Z2 & SteadySteer™ (Free AgFiniti® account required) (Figure 1)
- **ENHANCED:** File Transfer – .AGDATA files automatically upload after leaving a field
- **FIXED:** Inner field boundaries not appearing correctly
- **FIXED:** Various ISOBUS multi-channel configuration & UT fixes

Planting

- **NEW:** Advanced Seed Monitoring on Kinze planters with PMM modules (Compatible seed sensors required)
- **NEW:** SureForce® support for Great Plains (See supported platform matrix)
- **FIXED:** SureForce® remaining in a hold state after leaving the headlands

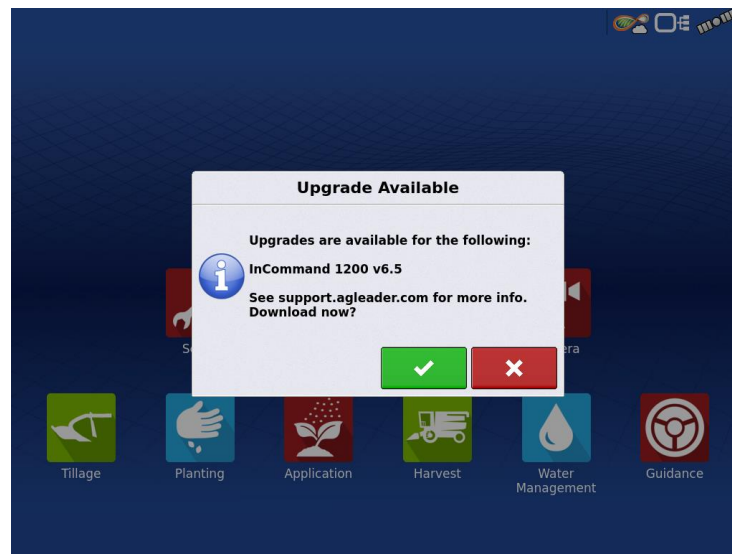
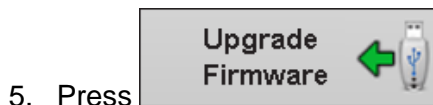



Figure 1 – Download & install firmware automatically (AgFiniti® login & Internet connection required)

Instructions for updating:

1. Copy the latest upgrade file to your external USB drive. It will have a .fw3 file extension.
2. Insert the external USB drive in the display



8. Display will process the file and ask “The upgrade is ready to install. Would you like to continue?” Press 

9. Display will cycle power automatically

10. The display upgrade will progress through 100% and then automatically power cycle.

The upgrade is now complete