

InCommand® Version 7.0 Firmware Release

Ag Leader Technology® is pleased to announce the release of new firmware. Features and improvements in this version are listed below. This free upgrade is available for download from <http://www.agleader.com>.

IMPORTANT!

- A. It is recommended that a backup be created prior to upgrading display firmware
- B. SMS™ Version 22.0 required to read in map data from version 7.0

New in 7.0

General

- **NEW:** Upload & Share Display, SCM, & GPS diagnostic log files via AgFiniti
- **NEW:** Free AgFiniti® license accounts can transfer files with InCommand®
- **ENHANCED:** Login robustness with AgFiniti®
- **ENHANCED:** DisplayCast® performance to speed up syncing and reduce data usage
- **ENHANCED:** DisplayCast® alarm reporting & logging
- **FIXED:** DisplayCast not syncing when importing additional variety tracking maps
- **FIXED:** Displays not fully booting up
- **FIXED:** Unsuccessful display upgrades from AgFiniti® (Updating via USB required for v7.0, future versions will successfully upgrade from AgFiniti) (TIA-169)

GPS & Guidance

- **NEW:** Port C support with GPS 6000/6500/7000/7500 (Figure 1)
- **NEW:** SmartPath® Guidance always enabled
- **ENHANCED:** SmartPath® pattern grouping options (Figure 2)
- **ENHANCED:** Set B point after 33ft (10m) on straight and identical curve guidance lines
- **ENHANCED:** Show guidance line heading in the load pattern dialog
- **FIXED:** Guidance width not always defaulting to Implement width

Planting

- **NEW:** Alert when the delivery tube seed sensor is obstructed (SureSpeed®)
- **NEW:** Support for cotton, milo, & sugar beet crop types (SureSpeed®)
- **ENHANCED:** Notifying when downforce is in a hold state (Figure 3) (SureForce®)
- **ENHANCED:** Inadvertent delivery tube alarms when turning on headlands (SureSpeed®)
- **ENHANCED:** Seed sensor performance in corn and soybeans (SureSpeed®)
- **FIXED:** Planter test stand reporting for planter average and row summary (SureSpeed®)

Harvest

- **FIXED:** Communication drops with CLAAS Quantimeter harvest & steering system

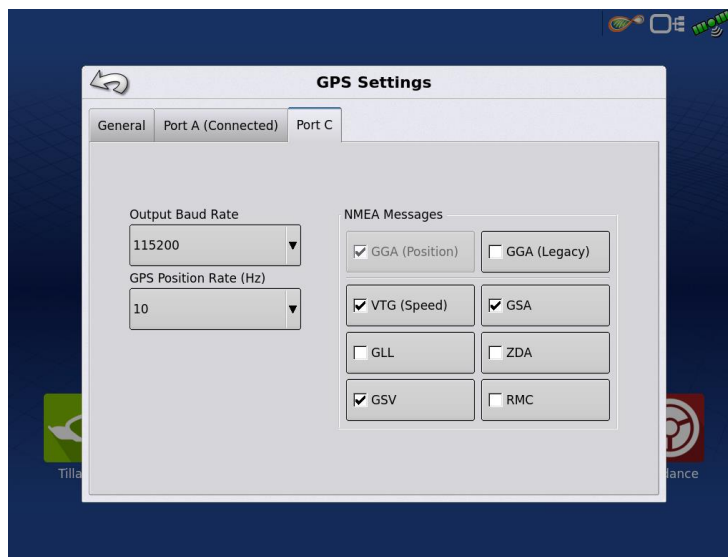


Figure 1 – Configure Port C settings with GPS 6000/6500/7000/7500 **Require additional cable PN: 4006779-18**

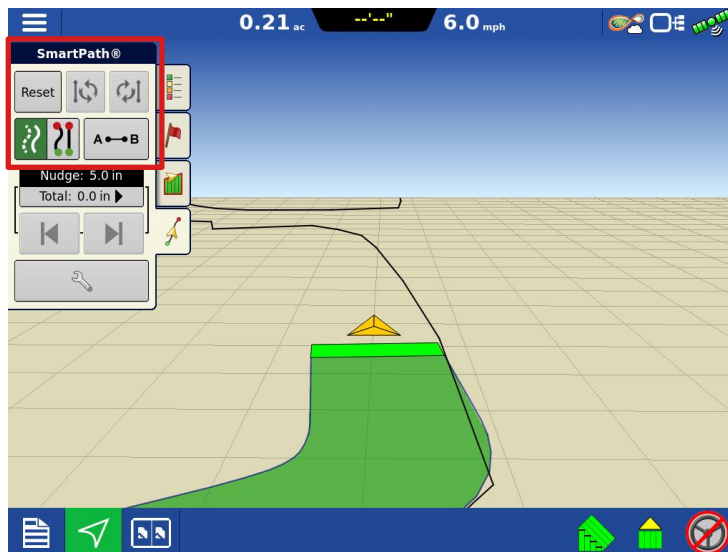


Figure 2 – Able to group identical curve guidance patterns with SmartPath®

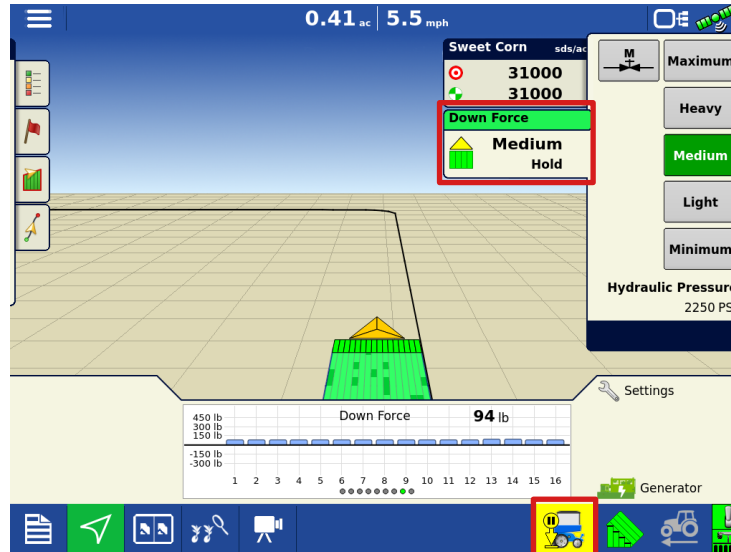


Figure 3 – Show current downforce mode & signal users when the system is in a hold state

New in 6.6

GPS & Guidance

- **FIXED:** Unable to communicate with GPS 7500 RTK Relays (TIA-165)

New in 6.5

General

- **NEW:** Automatically update firmware using AgFiniti® for InCommand®, GPS 7500, SteerCommand® Z2 & SteadySteer™ (Free AgFiniti® account required) (Figure 1)
- **ENHANCED:** File Transfer – .AGDATA files automatically upload after leaving a field
- **FIXED:** Inner field boundaries not appearing correctly
- **FIXED:** Various ISOBUS multi-channel configuration & UT fixes

Planting

- **NEW:** Advanced Seed Monitoring on Kinze planters with PMM modules (Compatible seed sensors required)
- **NEW:** SureForce® support for Great Plains (See supported platform matrix)
- **FIXED:** SureForce® remaining in a hold state after leaving the headlands

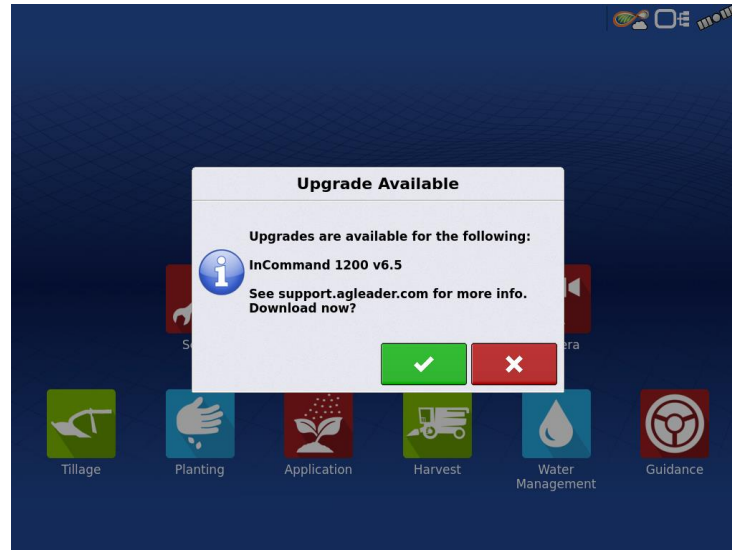


Figure 1 – Download & install firmware automatically (AgFinit® login & Internet connection required)

New in 6.4

General

- **FIXED:** Editing ISO look-aheads causing InCommand® to go into service mode
- **FIXED:** Unable to reload events when running an ISOBUS seeding and planting config
- **FIXED:** ISOBUS configuration mismatch when setup as an Air Seeder (Vaderstad TPV)
- **FIXED:** Alarms causing InCommand to go into service mode

GPS & Guidance

- **FIXED:** Half Width First Pass when creating Tramlines from the right boundary edge

Planting

- **ENHANCED:** Downforce not responding alarms (SureForce®, & RxR Downforce) (TIA-160)
- **FIXED:** Downforce only interplant rows not loading correctly (SureForce®, & RxR Downforce) (TIA-158)
- **FIXED:** Kinze 4900 ISO planting modules dropping when used with SureForce®

New in 6.3

Planting

- **FIXED:** SureSpeed™ seed sensor unrecoverable after upgrade. (TIA-154)

New in 6.2

General

- **NEW:** ISOBUS Task Controller support for seeding & application ECU's that can control multiple rates across the implement (TC-GEO Example 9)
- **NEW:** ISOBUS Task Controller support for multiple seeding products
- **NEW:** Enable/disable display shutdown standby mode when using key-switched power
- **ENHANCED:** DisplayCast® performance improvements to speed up syncing and reduce data usage
- **ENHANCED:** CartACE® collision warnings (TIA-145)
- **FIXED:** ISOBUS tractor telematics GPS preventing steering

GPS & Guidance

- **ENHANCED:** Tramlines guidance options (Figure 1)
- **ENHANCED:** Access Paths guidance options; guidance for the access path
- **ENHANCED:** Boundary logging with a forward or backward offset
- **FIXED:** Identical curve pattern generation when lines come from SMS

Planting

- **NEW:** SureSpeed™ planter performance check & report (Figure 2)
- **NEW:** Third rate group for the Seed Rows unlock
- **ENHANCED:** Accessibility to downforce settings & generator diagnostics from the map screen (Figure 3)
- **FIXED:** SureForce® unable to be configured correctly when using ISO planting modules

Intellislope

- **FIXED:** Intellislope functionality with SteerCommand® Z2 & SteadySteer™ (TIA-147)

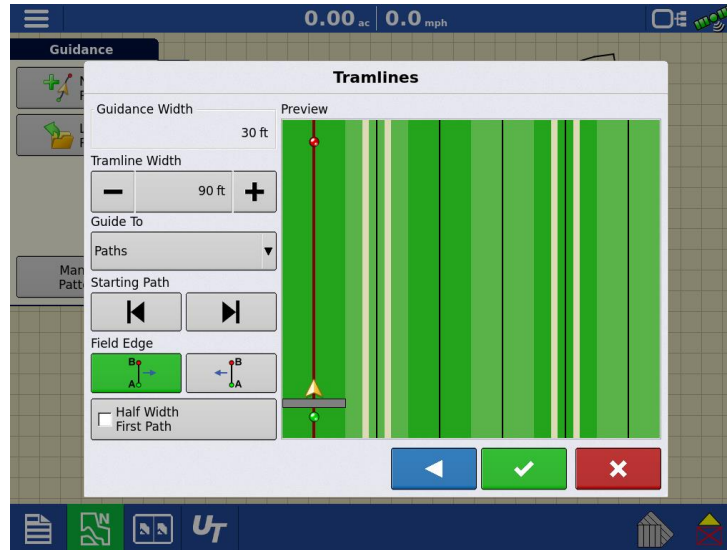


Figure 1 – Tramlines guidance preview window; Option for using half width on the first path

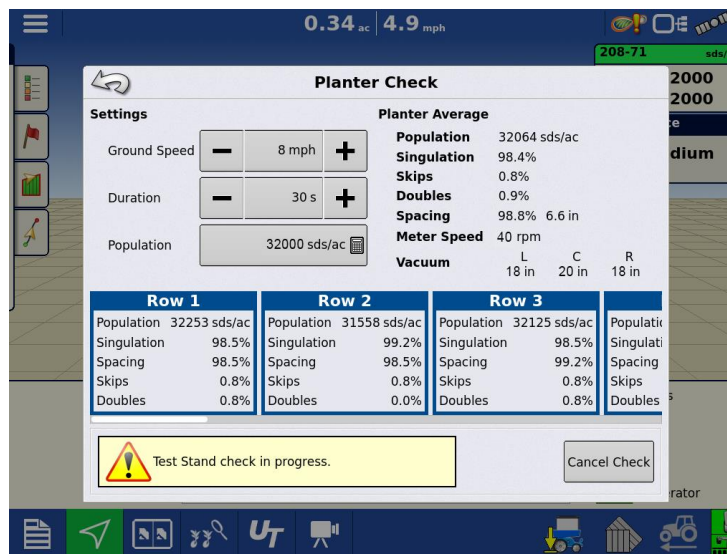


Figure 2 – SureSpeed™ planter performance check

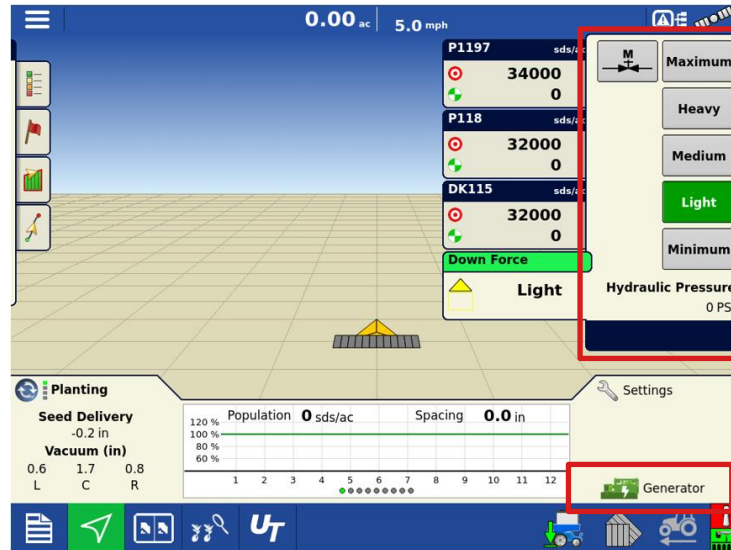
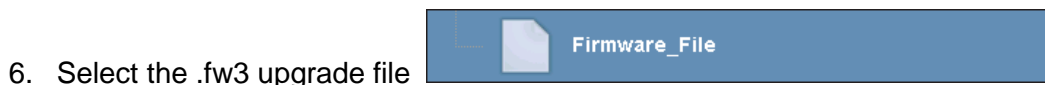



Figure 3 – Downforce control settings tab; Generator operation indicator

Instructions for updating:

1. Copy the latest upgrade file to your external USB drive. It will have a .fw3 file extension.
2. Insert the external USB drive in the display



8. Display will process the file and ask “The upgrade is ready to install. Would you like to continue?” Press 

9. Display will cycle power automatically

10. The display upgrade will progress through 100% and then automatically power cycle.

The upgrade is now complete